

Installing a SIM Card

You can use a SIM card for wireless internet access.



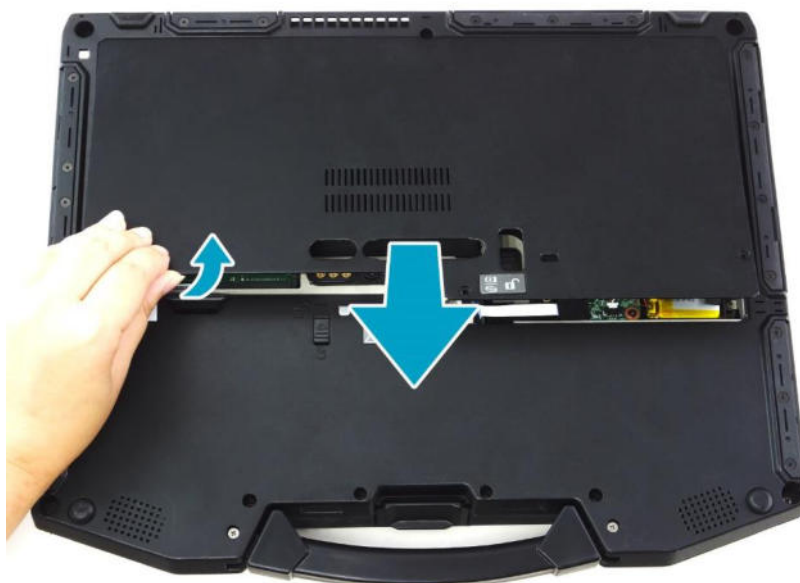
NOTE

- Check the availability of service and data plan rates with your network service provider.
- Make sure to turn off the notebook before inserting the SIM card.

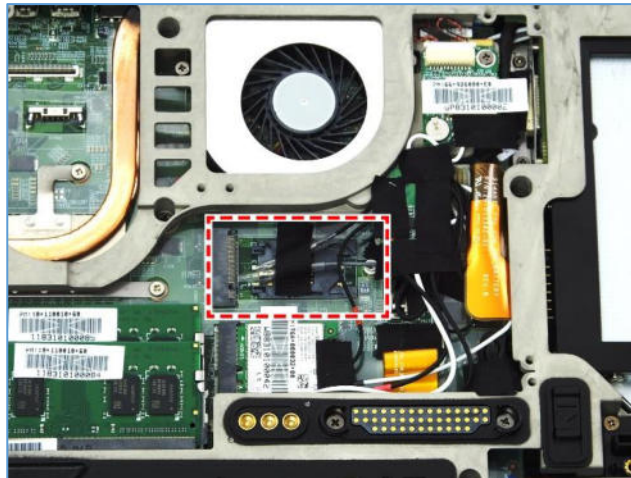
1. Remove the screws securing the CTO door, as indicated below.



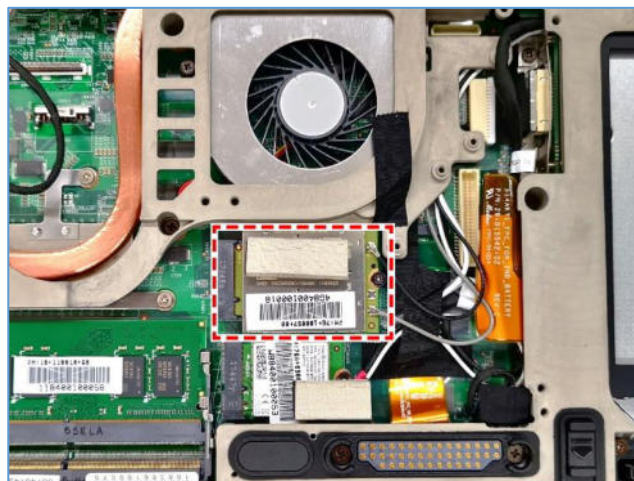
2. Remove the CTO door.



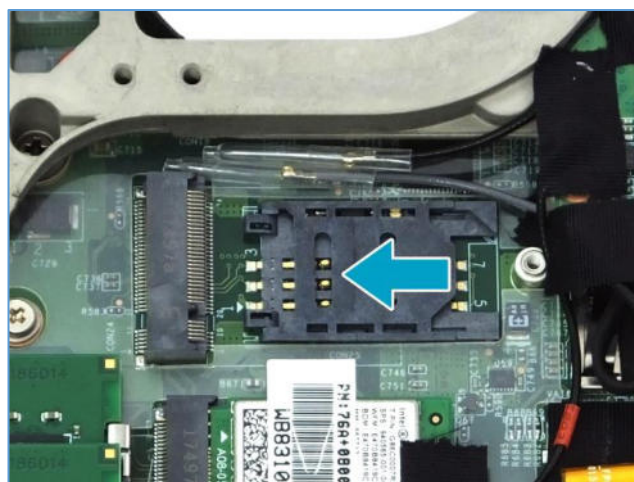
- ❖ Without LTE module: Proceed to [Step 3](#).



- ❖ With LTE module: Remove the screw securing the LTE module. Then carefully pull to disconnect the LTE module from the mainboard connector.

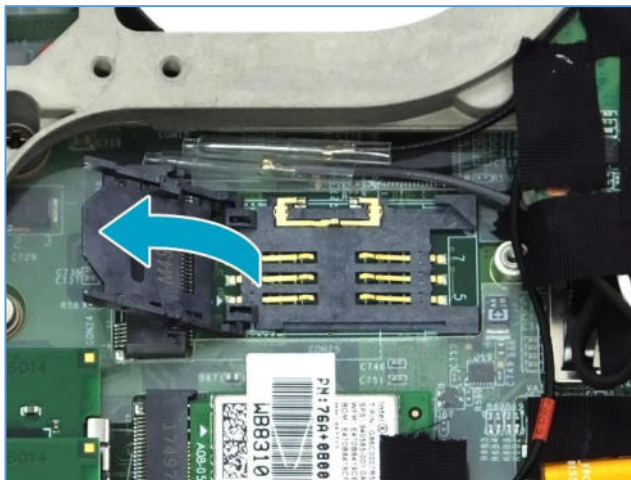


3. Push the SIM card slot forward to release it from the latch.

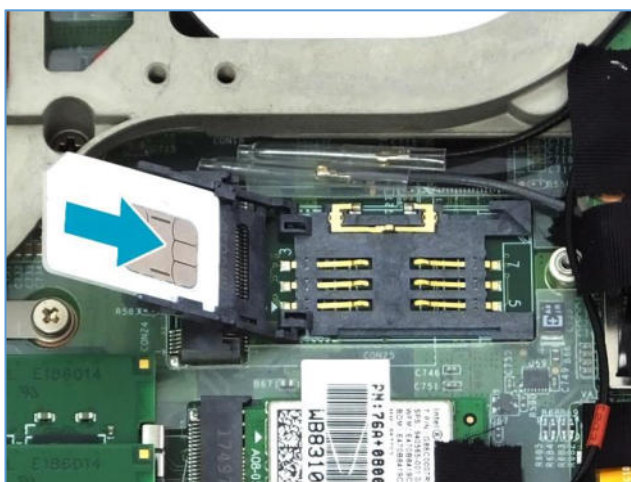


Making Connections

4. Lift the SIM card slot upwards.



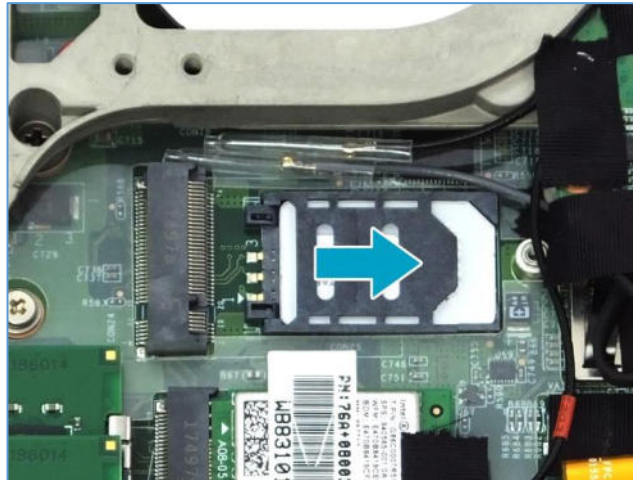
5. Slide a SIM card into the SIM card slot.



6. Gently press down the SIM card slot.



7. Push the SIM card slot as indicated with the arrow below until it locks into place.



8. Replace the CTO door and secure it using the screws.

Installing a Smart Card

Your notebook is equipped with a built-in smart card reader that allows you to make secure purchases, store security information, and provide identification and information using a smart card.

1. Pull to open the battery compartment cover.

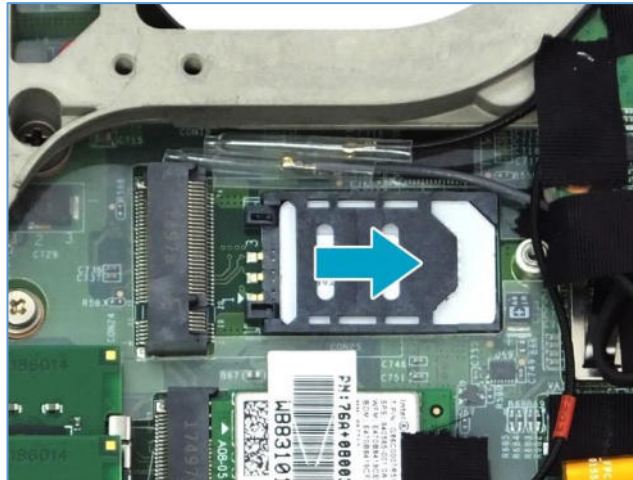


2. Insert a smart card into the smart card slot.



3. Close the battery compartment cover.

7. Push the SIM card slot as indicated with the arrow below until it locks into place.



8. Replace the CTO door and secure it using the screws.

Installing a Smart Card

Your notebook is equipped with a built-in smart card reader that allows you to make secure purchases, store security information, and provide identification and information using a smart card.

1. Pull to open the battery compartment cover.



2. Insert a smart card into the smart card slot.



3. Close the battery compartment cover.